



**PC**mina  
FLAT STEEL

**TECTONIC QUALITY**

*For Every Construction*



# THE JOURNEY TO CREATE A LEGACY OF POMINA FLAT STEEL

## PIONEER IN TECHNOLOGY

10

- Development Milestones 7
- Vision & Mission 8
- Core Values 9
- World Class Factory Management System 11
- Manufacture Process 12
- Advanced Technology 14
- Quality First 16

## THE RESULTS OF LABOR

18

- Manufacturing Products 19
  - Commercial Products 20
  - Superior Products 23
  - Monumental Products 26
- 
- Customers & Outstanding projects 28
  - Customers Distribution System 32
  - Exportation 33
- 
- Media & Pomina Flat Steel 34
  - Comminucation Services 36



## THE JOURNEY TO CREATE A LEGACY OF POMINA FLAT STEEL

*Dear Esteemed Customers and Partners,*

The establishment of Pomina Flat Steel Joint Stock Company marks a significant milestone in our strategic growth, driven by our unwavering commitment to the development of high-quality products.

As an aspirational leader in the domestic steel industry, we aspire to become the foremost reputable and trustworthy flat steel corporation, and the pride of both customers and the heavy industry in Vietnam. To accomplish this vision, Pomina Flat Steel has adopted a distinct and focused path - to fulfill each and every one of our commitments - and a resolute dedication to the production of high-quality galvanized products.

In our pursuit of this objective, Pomina Flat Steel has made substantial investments in cutting-edge production infrastructure, leveraging the advanced technologies and equipment provided by Tenova, a renowned manufacturing technology conglomerate based in Italy, Europe. Additionally, our strategic partnerships with globally reputable entities such as Nippon Steel (Japan), Posco (South Korea), Chung Hung (Taiwan), Akzonobel (Netherlands), and PPG (United States) ensure a consistent supply of top-quality steel coils and superior coating materials.

Through these collaborations, Pomina Flat Steel consistently delivers galvanized products that conform to stringent international standards and meet the discerning requirements of leading quality certifications from prominent nations including Japan, Europe, and the United States.

At Pomina Flat Steel, we firmly believe that a trustworthy corporate culture forms the bedrock of ever-lasting customer trust and commitment. It is the cornerstone that has empowered us to establish an extensive distribution network across the country successfully, while also solidifying our presence and reputation in the international market.

We cordially invite our esteemed customers and partners to embark on a truly immersive experience with Pomina Flat Steel.

We are confident that our exceptional products, combined with our distinguished customer experiences, will reinforce the special bond and unwavering commitment of our esteemed customers and partners to our brand.

Thank you for your continued support and partnership.

Yours sincerely,

**The Board**  
**Pomina Flat Steel Joint Stock Company**

# **EUROPEAN TECHNOLOGY REACH OUT TO THE WORLD**

ASTM A755/A755M Standards Pre-painted Hot Dip Aluminum-Zinc Steel Coil  
shipment to the US market



**Fading Warranty**



# DEVELOPMENT MILESTONES

2011

The feasibility study of the Pomina Flat Steel project

2017

- **June:** Obtained the construction permit for the Pomina Flat Steel project.

- **August:** Drove the first pile for Pomina Flat Steel project.

2018

Successfully tested factory operation with an initial capacity of **250,000 tons per year.**

2019

- **July:** The company launched its first product in the market.

**September to October:** Exports reached 40% of the company total capacity.

- **September:** Expanded market reach to Mexico.

- **October:** Successfully introduced the first shipment to the USA market.

2021

- **May:** Successfully exported a shipment meeting EN 10346 standards to Belgium.

**June:** Introduced a new superior product line, Pomina Granite.

**July to November:** Export markets grown at a fast pace with continuous successes from Italy, Spain, France, Germany, Mexico, North America, and Papua New Guinea.

2020

**October:** Pioneered the invention of Pomina Solar product series with double coating layer.

2022

- **January:** Delivered an iconic shipment and officially became the first and still the only company able to established a 40-year fading warranty period in the US market. Conquered the Italian market with EN 10169 standard PPGL products and the markets of Belgium and Spain with the corrugated metal sheets product line.

- **February to October:** Maintained and steadily increased the export volume to markets in the Americas, Europe and Asia.

2023

**January:** Conquered Jamaica market with our AS 1397 Standards products.

2025

Officially launch phase 2

Expanding the scale, increasing the factory capacity to 1,200,000 tons/year

Expanding the nationwide distributor system

2024

Successfully transferred all shares to the new board of directors. Increased charter capital to VND 1,200 billion, which optimized production lines.

Comprehensive restructuring, ready to enter phase 2 of the investment project



## VISION

To become the foremost reputable and trustworthy flat steel corporation and the pride of both customers and the heavy industry in Vietnam.



## MISSION

To fulfill each and every one of our commitments, starting with providing products with accurate quantity and standardized quality for partners and consumerstomers.





## CORE VALUES

**Upright:** Always do what is right from the beginning, act honestly, and with honor.

**Trustworthy:** Build a trustworthy culture to become a reputable brand, ensure long-lasting success with partners and customers.

**Continuous evolution:** Learning and advancing through innovation to constantly catch with the demands of the modern era.

**Serve Efforts:** Do the best to satisfy our customers and partners.



# **PIONEER IN TECHNOLOGY**

INVESTING IN THE LEADING MANUFACTURING TECHNOLOGY  
FROM **EUROPE**

**CAPACITY**

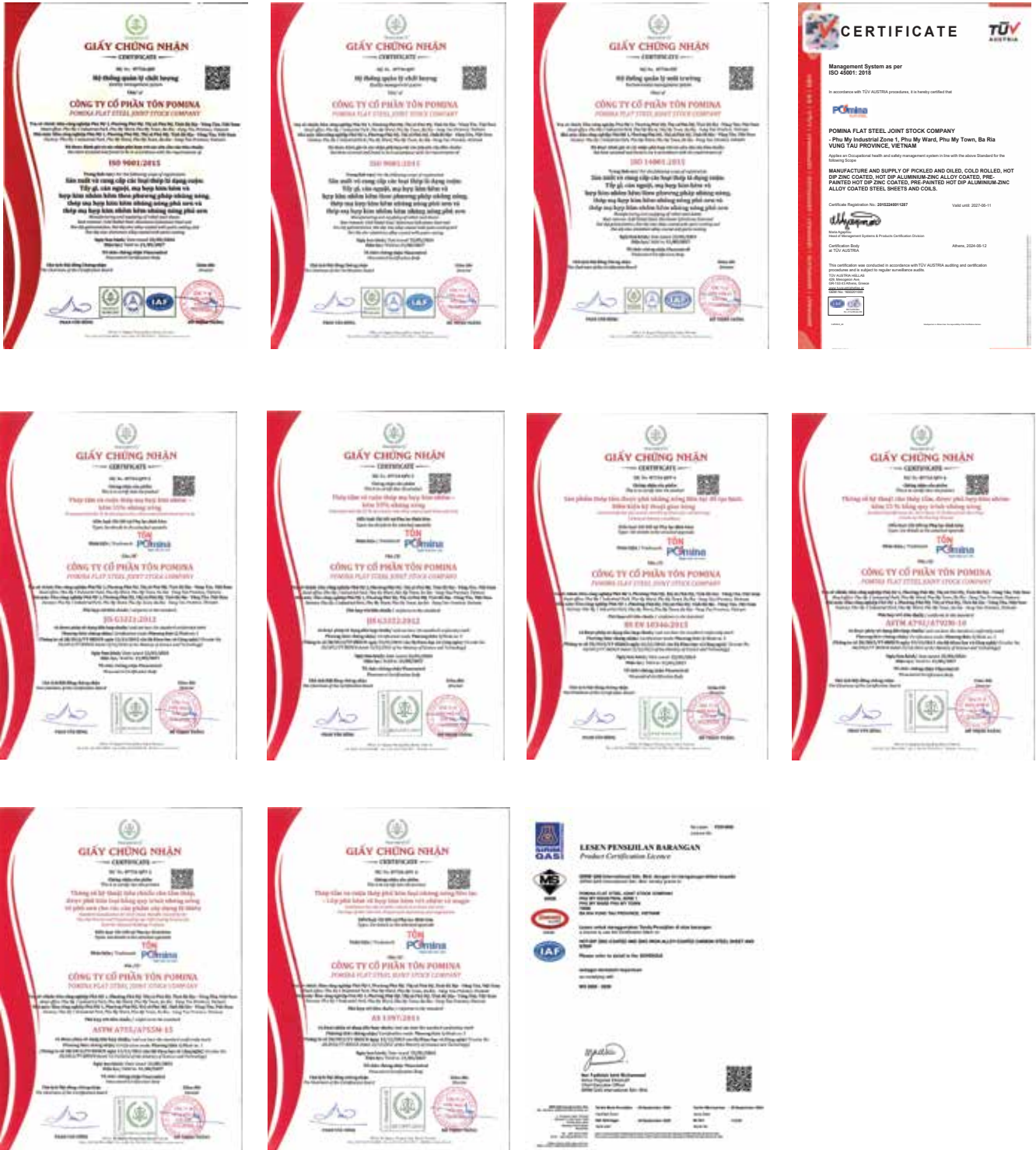
**1,200,000** tons/year

tenova 

tenova 

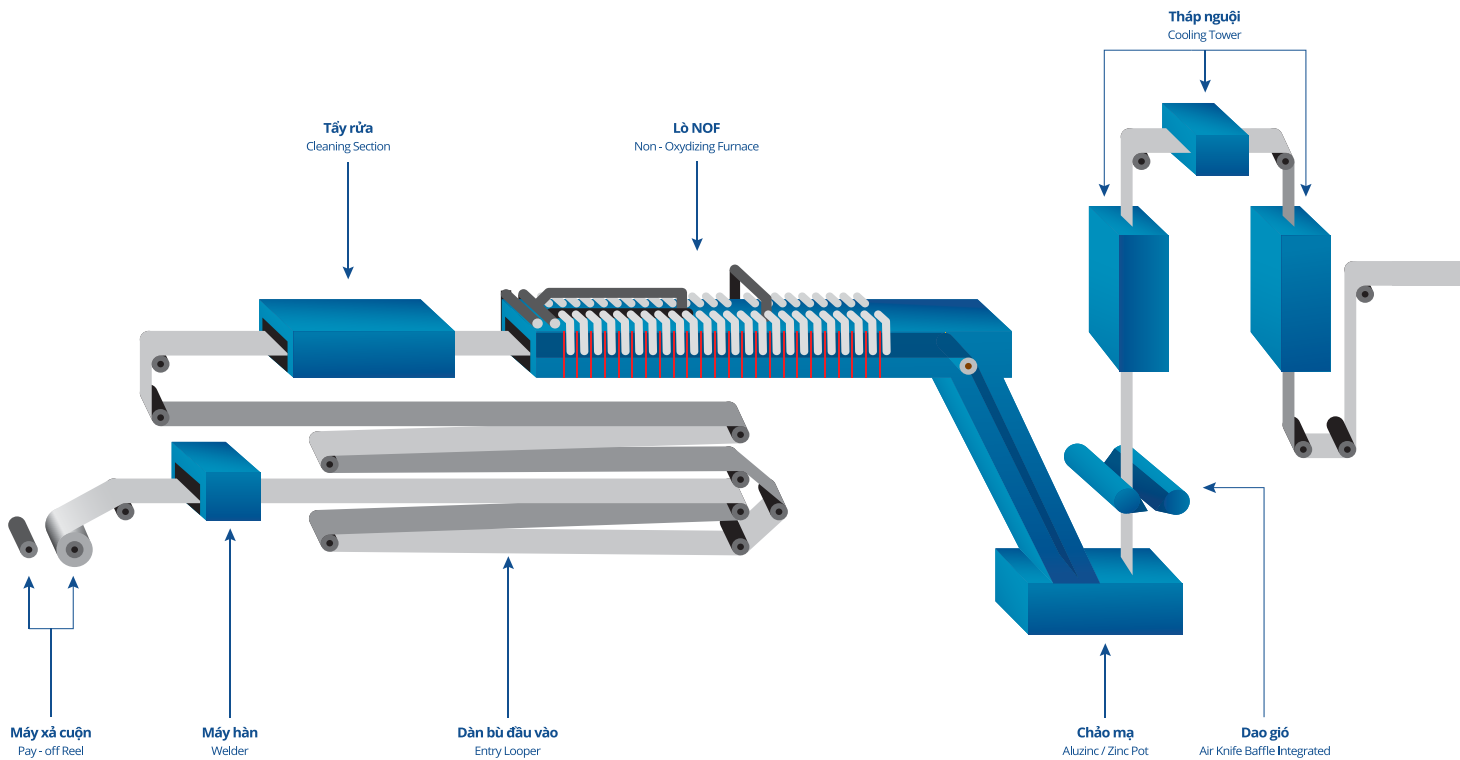
# WORLD CLASS FACTORY MANAGEMENT SYSTEM STANDARD

Prioritizing investments in state-of-the-art European manufacturing machinery to optimize product quality. Establishing a cutting-edge waste treatment system to ensure safety and environmental friendliness. The factory management system's quality is certified by the renowned international organization ISOCERT.




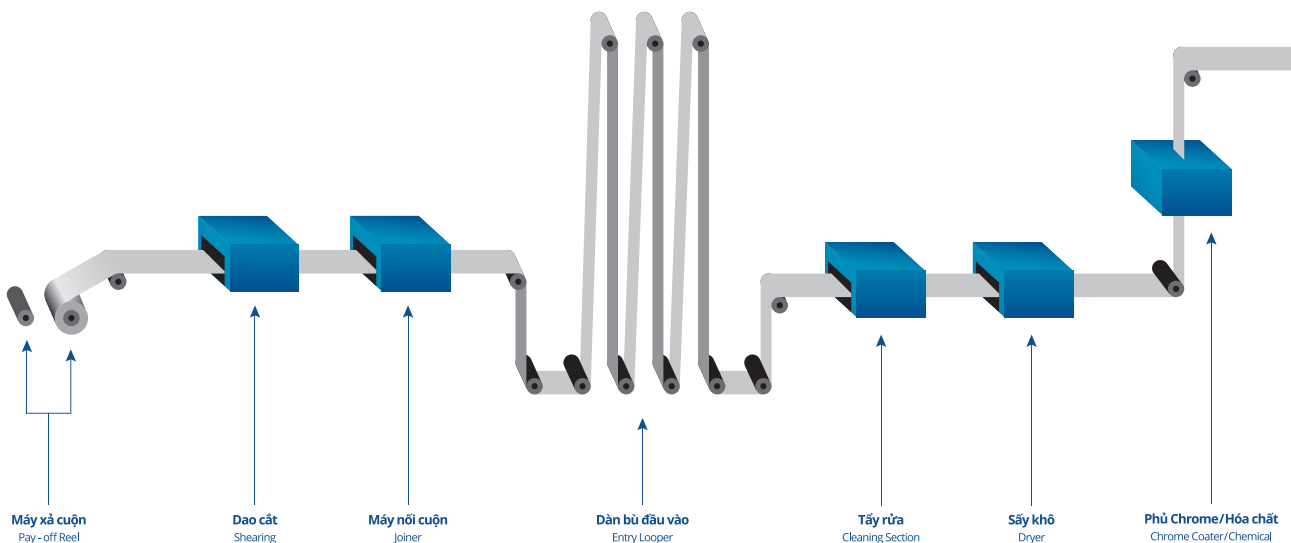
## CONTINUOUS GALVANIZING LINE

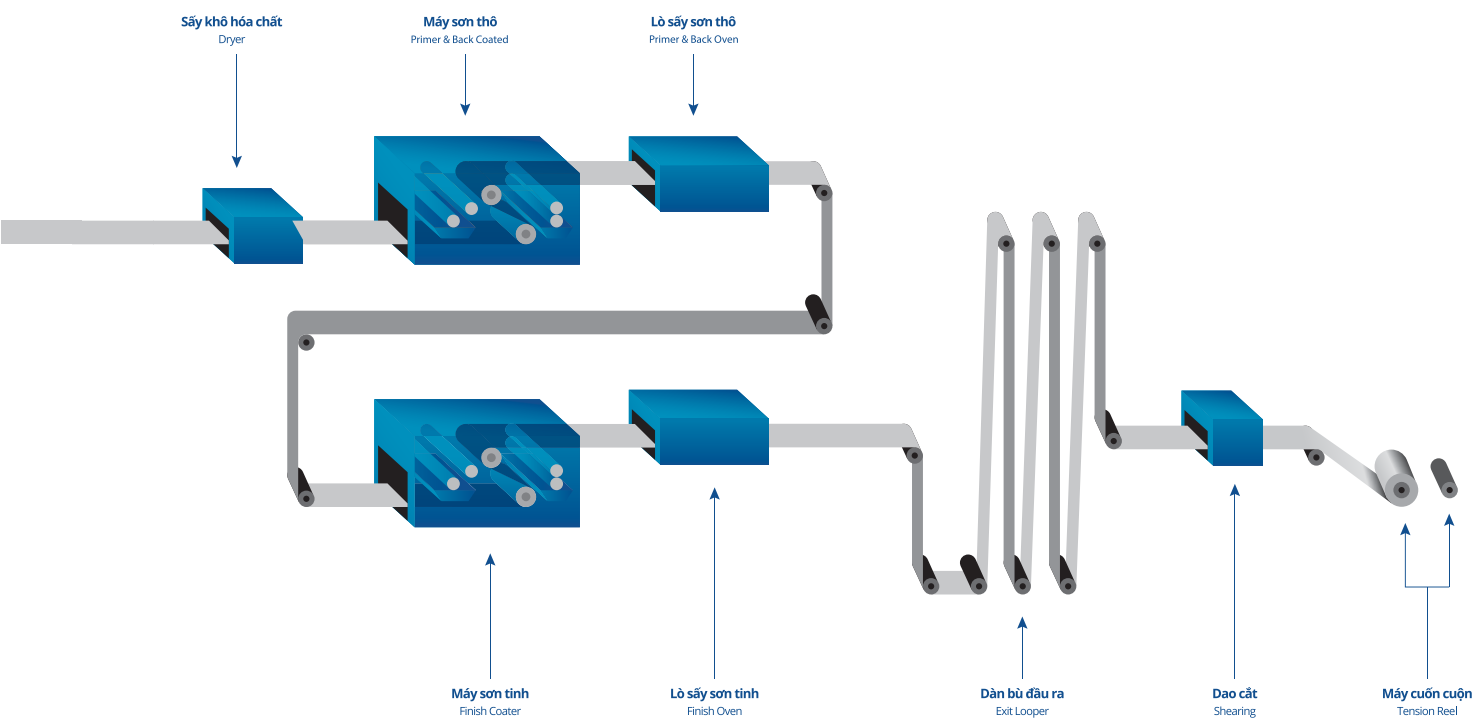
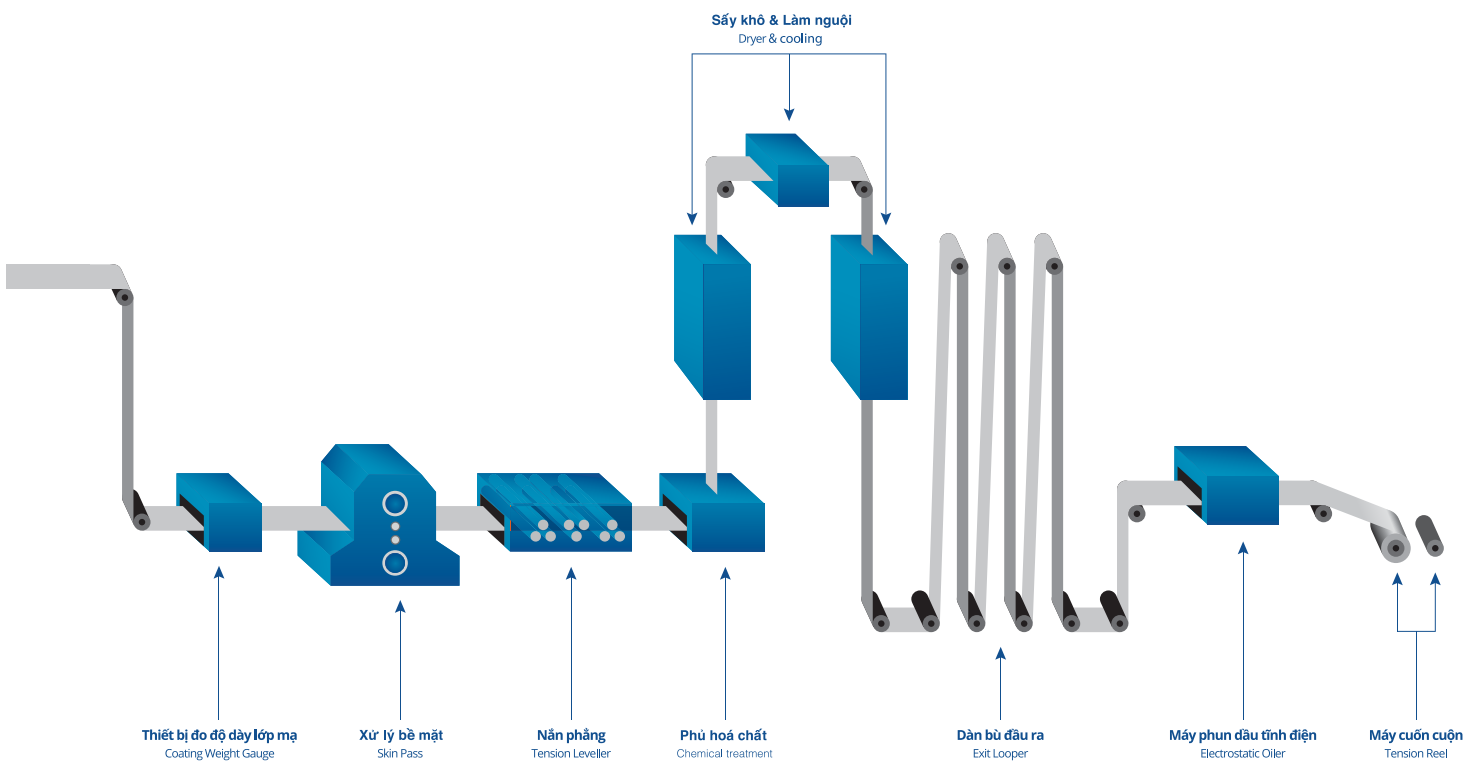
Line Direction 



## CONTINUOUS COLOR COATING LINE

Line Direction 





100% of the machinery and operating technology system is installed by Tenova Group, Italy - a leading brand in the global metal industry.

### **PUSH-PULL PICKLING LINE & ACID REGENERATION PLANT**

**Quantity:** 01 production line

**Function:** Cleaning hot-rolled coil surfaces and cutting edges to specific sizes

**Total capacity:** 600,000 tons/year (Phase 1)

**Specification:** 1,6 - 4 x 650 - 1250mm



The Cold-rolling Machine, Continuous Galvanizing Line and Continuous Color Coating Line are fully automated, ensuring millimeter accuracy over each 10,000 m<sup>2</sup> surface.

### **COLD ROLLED COIL LINE (CRC)**

**Quantity:** 01 production line

**Function:** Cold-rolling pickled & oiled coils to achieve the targeted thickness

**Total capacity:** 582,000 tons/year (Phase 1)

**Specifications:** 0,2 - 2 x 650 - 1250mm





### CONTINUOUS GALVANIZING LINE

**Quantity:** 01 production line

**Function:** Coat the base steel surface with a protective alloy layer

**Total capacity:** 600,000 tons/year (Phase 1)

**Specifications:** 0,2 - 2 x 650 - 1250mm



### CONTINUOUS COLOR COATING LINE

**Quantity:** 01 production line

**Function:** Coat the galvanized steel surface with paint

**Total capacity:** 120,000 tons/year (Phase 1)

**Specifications:** 0,2 - 0,8 x 750 - 1250mm

The product quality is inspected by state-of-the-art equipments directly imported from Japan, Germany, Spain and Netherlands, etc.



**SPECTROPHOTOMETER**

Spectrolab - Germany



**INFLATING EQUIPMENT**

Testone - Korea



**COLOR SCRATCH TESTER**

Neurtek - Spain



**PENCIL HARDNESS TESTER**

Testone - Korea



**PAINT'S DURABILITY WITH MEK SOLVENT TESTER**

DJH - Korea



**SPECTROPHOTOMETER SPECTROMASTER 565-45**

Erichsen - Germany



**TENSILE & ELONGATION  
TESTING MACHINE**

Shimadzu - Japan



**IMPACT TESTER**

Neurtek - Spain



**HARDNESS TESTER**

Innovatest - Netherlands



**COLORIMETRIC CABINET**

Neurtek - Spain



**SALT MIST MACHINE**

Neurtek - Spain



**PAINT THICKNESS GAUGE FOR  
PRE-PAINTED STEEL SHEET**

DJH - Korea

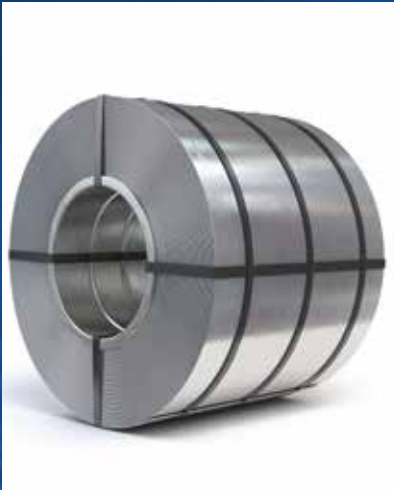


**ANTIFINGER THICKNESS  
MEASURE MACHINE**

Kurabo - Japan

# ***THE RESULTS OF LABOR***

A product is a source of pride



**COLD ROLLED COIL**



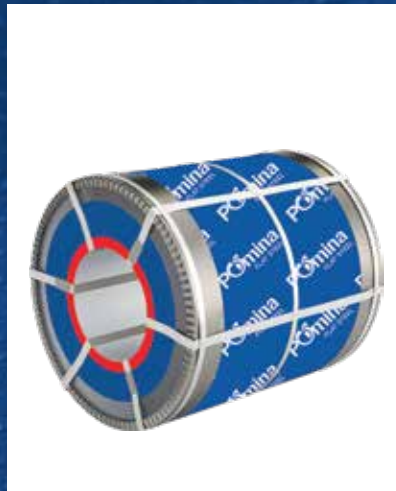
**GALVANIZED  
STEEL COIL**



**SANDWICH PANEL  
STEEL COIL**



**POMINA STEEL  
SHEET COIL**



**SOLAR STEEL  
SHEET COIL**



**SHIELDVIET STEEL  
SHEET COIL**

## • PO - PICKLED AND OILED STEEL

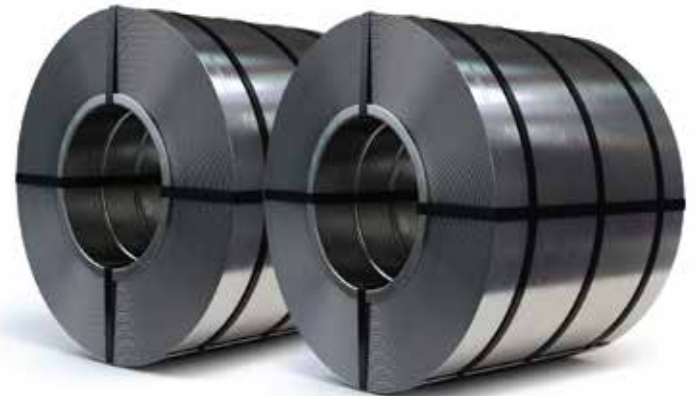
Pickled and Oiled steel (PO) is a product made from hot-rolled steel through a pickling line to remove the rust layer on the steel surface, then cleaned and oiled.

Pickled and Oiled steel is applied in many manufacturing fields such as cold-rolled steel, spare parts for motorcycles, bicycles, mechanical components, and steel pipes...

## • COLD-ROLLED

Cold-rolled coil (CRC) is produced from pickled and oil steel coils (PO) passing through a cold-rolling machine.

Cold rolled coil is used as a semi-finished product for GI, GL, PPGI, PPGL products.



## • HOT DIP GALVANIZED STEEL COIL

Hot dip Galvanized steel coil (GI) is also known as galvanized steel or galvanized cold-rolled coil. Galvanized steel coil is highly resistant to corrosion in the natural environment. The product is commonly used for the civil construction or industrial construction, such as roofing, partitions, floor coverings and other applications...

Hot dip Galvanized steel coil is manufactured through a process that involves cold-rolled coils passing through a galvanizing line, which includes surface cleaning and annealing in NOF furnaces to modify the mechanical properties of the steel. Subsequently, a layer of zinc alloy is applied using the hot-dip galvanizing method with air-knife technology, and finally, the surface is coated with an anti-oxidation protective chemical layer.



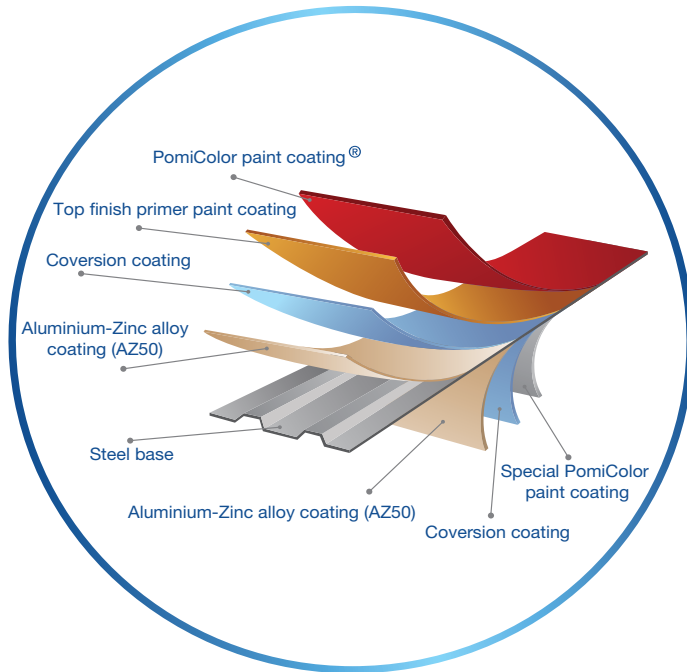
## SANDWICH PANEL

### Characteristics

The smooth and robust coating on the alloy coated steel, with AZ50/AZ100 coating thickness, enhances the resistance to harsh environments and provides optimal protection for the steel surface. Additionally, the backside of the Sandwich panel is specially designed to improve adhesion with the foam coating.

### Applications

Ideal for residential projects with heat insulation, fire resistance, noise reduction, and waterproofing needs, such as houses, schools, public buildings, cultural centers, hospitals, and toll booths, etc..



SPECIFICATION	Width (mm)	BMT thickness (mm)	APT thickness (mm)	Density (kg/m ± 0.15)
• Coating mass: AZ50	1200	0.37	0.40	3.45
• Grade: G350 - G550	1200	0.42	0.45	3.92
• Standard: BS EN 10169 (EU)	1200	0.47	0.50	4.39
• Color coating thickness: 17/05 µm	1200	0.57	0.60	5.33

### COLOURS



RECOGNITION GREY  
PGRA13



DARK GREY  
PGRA14



SILVER GREY  
PGRA15



MOONSTONE WHITE  
PWHI11



PEARL YELLOW  
PYEL11



AQUAMARINE BLUE  
PBLU20

\*The steel colours shown in the catalogue have been reproduced to product colours. However, we recommend you check the chosen colour against actual samples of the product as varying light conditions and limitations of printing affect colour tones.

## POMINA HOT DIP ALUMINIUM-ZINC COATED STEEL COIL

### Characteristics & Applications

AZ80/AZ100/AZ150 aluminum-zinc coating with a composition of 55% Al, 43.5% Zn, and 1.5% Si, combined with an anti-fingerprint and anti-oxidation layer, provides suitable quality for various civil projects such as residential buildings, schools, office spaces, etc.

SPECIFICATION	Width (mm)	BMT Thickness (mm)	TCT Thickness (mm)	Density (kg/m ± 0.15)
<ul style="list-style-type: none"> <li>• Coating mass: AZ80</li> <li>• Grade: G350 - G550</li> <li>• Standard: BS EN 10346 (EU)</li> </ul>	1200	0.28	0.30	2.30
	1200	0.33	0.35	2.80
	1200	0.38	0.40	3.30
	1200	0.43	0.45	3.73
	1200	0.48	0.50	4.25



**AZ80** Anti-corrosion warranty

SPECIFICATION	Width (mm)	BMT Thickness (mm)	TCT Thickness (mm)	Density (kg/m ± 0.15)
<ul style="list-style-type: none"> <li>• Coating mass: AZ100</li> <li>• Grade: G350 - G550</li> <li>• Standard: BS EN 10346 (EU)</li> </ul>	1200	0.32	0.35	2.95
	1200	0.37	0.40	3.47
	1200	0.42	0.45	3.94
	1200	0.47	0.50	4.41
	1200	0.52	0.55	4.88
	1200	0.57	0.60	5.35



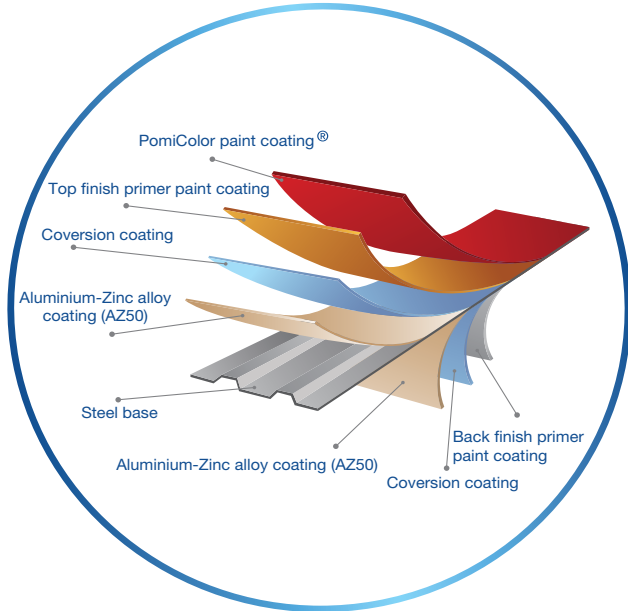
**AZ100** Anti-corrosion warranty

SPECIFICATION	Width (mm)	BMT Thickness (mm)	TCT Thickness (mm)	Density (kg/m ± 0.15)
<ul style="list-style-type: none"> <li>• Coating mass: AZ150</li> <li>• Grade: G350 - G550</li> <li>• Standard: BS EN 10346 (EU)</li> </ul>	1200	0.31	0.35	3.01
	1200	0.36	0.40	3.53
	1200	0.41	0.45	4.00
	1200	0.46	0.50	4.47
	1200	0.51	0.55	4.94
	1200	0.56	0.60	5.41



**AZ150** Anti-corrosion warranty

**POMINA PRE-PAINTED HOT DIP ALUMINIUM-ZINC COATED STEEL COIL**



**Characteristics**

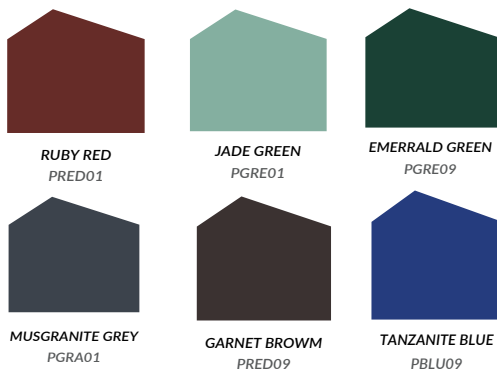
AZ50 Aluminum-Zinc coating with a composition of 55% Al, 43.5% Zn, and 1.5% Si, together with the super-durable PomiColor® color coating, ensures a bright surface, high corrosion resistance, and excellent color retention.

**Applications**

Commonly used in roofing applications for various civil projects such as tube-shaped houses, townhouses, villas, schools, parking lots, and horizontal or corrugated pipe ventilation systems and roller doors, etc..

SPECIFICATION	Width (mm)	BMT thickness (mm)	APT thickness (mm)	Density (kg/m ± 0.15)
<ul style="list-style-type: none"> <li>• Coating mass: AZ50</li> <li>• Grade: G350 - G550</li> <li>• Standard: BS EN 10169 (EU)</li> <li>• Color coating thickness: 17/05</li> </ul>	1200	0.27	0.30	2.30
	1200	0.32	0.35	2.75
	1200	0.37	0.40	3.20
	1200	0.42	0.45	3.75
	1200	0.47	0.50	4.25
<ul style="list-style-type: none"> <li>• Coating mass: AZ30</li> <li>• Grade: G350 - G550</li> <li>• Standard: BS EN 10169 (EU)</li> <li>• Color coating thickness: 15/05</li> </ul>	1200	0.27	0.30	2.25
	1200	0.32	0.35	2.75
	1200	0.37	0.40	3.23

**COLOURS**



**WARRANTY**



Fading warranty



Anti-corrosion warranty

\*The steel colours shown in the catalogue have been reproduced to product colours. However, we recommend you check the chosen colour against actual samples of the product as varying light conditions and limitations of printing affect colour tones.

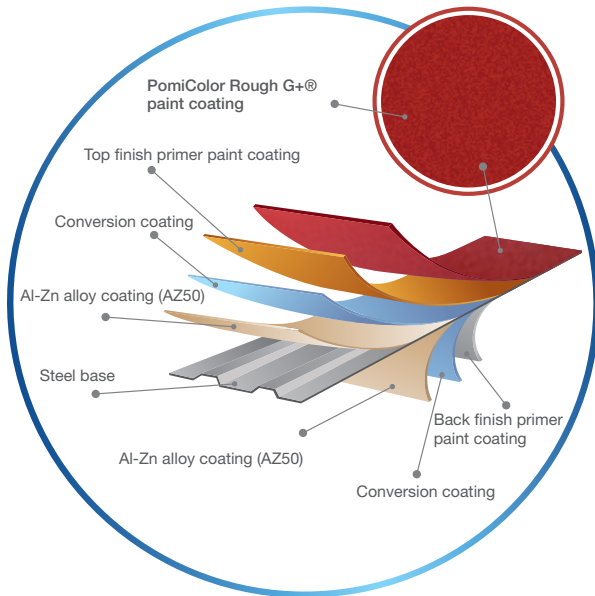
## GRANITE PRE-PAINTED HOT DIP ALUMINIUM-ZINC COATED STEEL COIL

### Characteristics

The Pre-painted Aluminum-Zinc coated steel product features a unique smooth circular pattern, with excellent dust resistance and high aesthetics, offering various elegant and classy tile roof styles. Moreover, the product is able to roll-formed to fit all standard wave profiles.

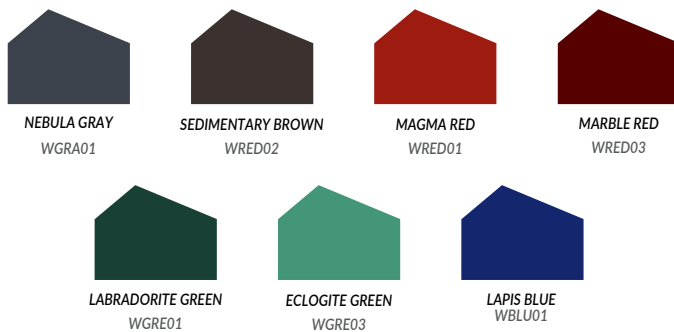
### Applications

The product is widely used in construction projects that demand high aesthetic standards, such as villas, multi-story townhouses, sloping roofs, European-style roofs, and Thai-style roofs, etc.



SPECIFICATION	Width (mm)	BMT thickness (mm)	APT thickness (mm)	Density (kg/m ±0.15)
<ul style="list-style-type: none"> <li>• Coating mass: AZ50</li> <li>• Grade: G350 - G550</li> <li>• Standard: BS EN 10169 (EU)</li> <li>• Color coating thickness: 20/05 µm</li> </ul>	1200	0.32	0.35	2.93
	1200	0.37	0.40	3.39
	1200	0.42	0.45	3.87
	1200	0.47	0.50	4.35

### COLOURS



### WARRANTY



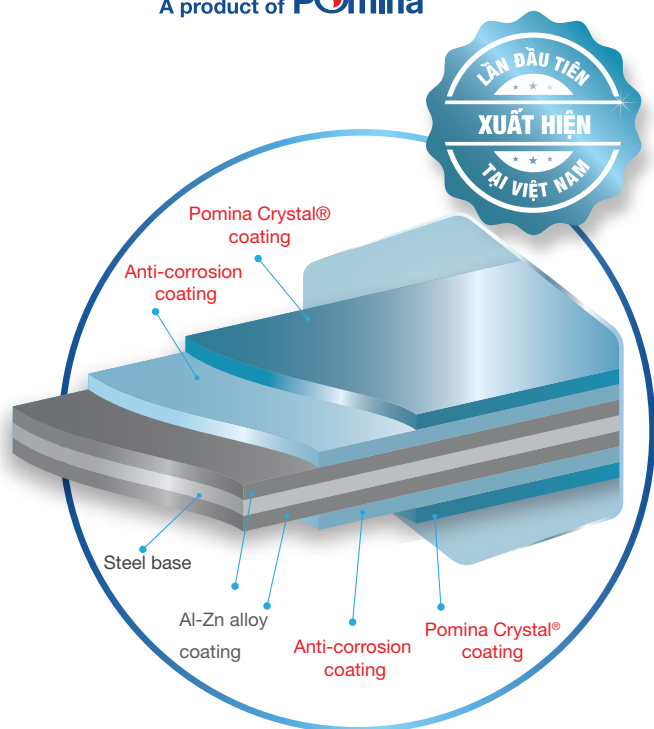
Fading warranty



Anti-corrosion warranty

\*The steel colours shown in the catalogue have been reproduced to product colours. However, we recommend you check the chosen colour against actual samples of the product as varying light conditions and limitations of printing affect colour tones.

## SOLAR HOT DIP ALUMINIUM-ZINC COATED STEEL COIL



### Characteristics

Featuring the transparent super protective layer Pomina Crystal® - a patented technology that provides better resistance for extreme environment like areas near the coast, with three times more effective than regular Aluminum-Zinc coated steel.

### Applications

Widely applied in civil projects, livestock farms, and areas near rivers, coastal regions, or places with harsh climates and challenging environments.

SPECIFICATION	Width (mm)	BMT thickness (mm)	TCT thickness (mm)	Density (kg/m ± 0.15)
<ul style="list-style-type: none"> <li>• Coating Mass: AZ100</li> <li>• Grade: G350 - G550</li> <li>• Standard: BS EN 10346 (EU)</li> </ul>	1200	0.32	0.35	2.95
	1200	0.37	0.40	3.47
	1200	0.42	0.45	3.94
	1200	0.47	0.50	4.41
	1200	0.52	0.55	4.88
	1200	0.57	0.60	5.35



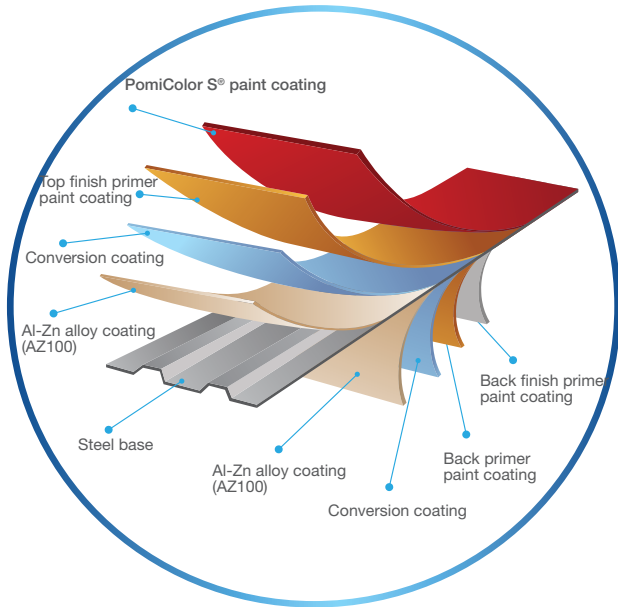
Anti-corrosion warranty

SPECIFICATION	Width (mm)	BMT thickness (mm)	TCT thickness (mm)	Density (kg/m ± 0.15)
<ul style="list-style-type: none"> <li>• Coating Mass: AZ120</li> <li>• Grade: G350 - G550</li> <li>• Standard: BS EN 10346 (EU)</li> </ul>	1200	0.32	0.35	2.98
	1200	0.37	0.40	3.49
	1200	0.42	0.45	3.96
	1200	0.47	0.50	4.44
	1200	0.52	0.55	4.91
	1200	0.57	0.60	5.38



Anti-corrosion warranty

## SOLAR PRE-PAINTED HOT DIP ALUMINIUM-ZINC COATED STEEL COIL



### Characteristics

The product features a thick AZ100 coating for strong oxidation resistance, combined with a durable and brightly colored PomiColor S® paint layer, effectively enhancing surface scratch resistance.

### Applications

Favored and widely used in industrial projects such as warehouses, factories, garages, large plants, and export processing zones, etc.

SPECIFICATION	Width (mm)	BMT thickness (mm)	APT thickness (mm)	Density (kg/m ±0.15)
<ul style="list-style-type: none"> <li>• Coating mass: AZ100</li> <li>• Grade: G350 - G550</li> <li>• Standard: BS EN 10169 (EU)</li> <li>• Color coating thickness: 22/10 µm</li> </ul>	1200	0.29	0.35	2.81
	1200	0.31	0.37	3.00
	1200	0.34	0.40	3.33
	1200	0.39	0.45	3.80
	1200	0.44	0.50	4.27

### COLOURS



### WARRANTY



Fading warranty



Anti-corrosion warranty

*The steel colours shown in the catalogue have been reproduced to product colours. However, we recommend you check the chosen colour against actual samples of the product as varying light conditions and limitations of printing affect colour tones.*

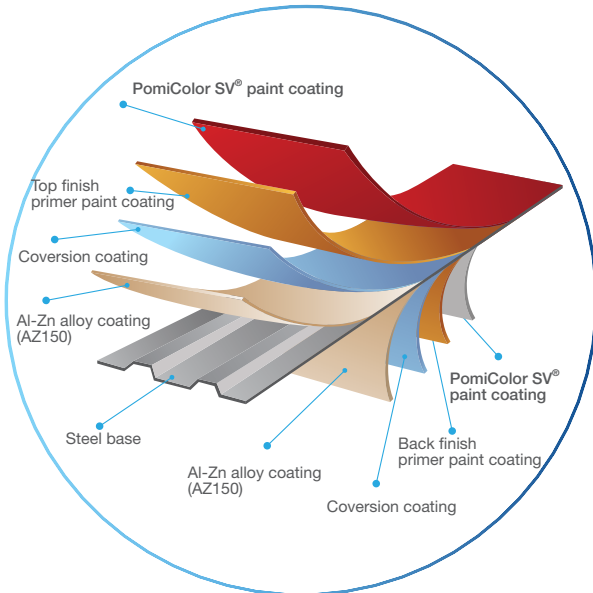
## SHIELDVIET ICECLOUD PRE-PAINTED HOT DIP ALUMINIUM-ZINC COATED STEEL COIL

### Characteristics

The AZ150 coating, along with the patented PomiColor SV® paint layer designed to enhance light reflection, thereby reducing heat absorption, resisting scratches, preventing mold, and limiting noise, forms a durable shield to protect projects in challenging conditions, such as coastal environments and chemical-rich surroundings.

### Applications

ShieldViet IceCloud is the perfect choice for coastal constructions, factories, and industrial zones, chemical-rich environments, and urban areas, with the desire for long-lasting endurance.



SPECIFICATION	Width (mm)	BMT thickness (mm)	APT thickness (mm)	Density (kg/m ±0.15)
<ul style="list-style-type: none"> <li>• Coating mass: AZ150</li> <li>• Grade: G350 - G550</li> <li>• Standard: BS EN 10169 (EU)</li> <li>• Color coating thickness: 25/10 µm</li> </ul>	1200	0.34	0.40	3.44
	1200	0.40	0.45	4.01
	1200	0.45	0.50	4.48
	1200	0.50	0.55	4.95
	1200	0.55	0.60	5.42
	1200	0.60	0.65	5.89

### COLOURS



AQUAMARINE BLUE  
PBLU19



EMERALD GREEN  
PGRE14



JADE GREEN  
PGRE15



MYSTERY DARK GREY  
PGRA09



RUBY RED  
PRED18



GARNET BROWN  
PRED22

### WARRANTY



Fading  
warranty



Anti-corrosion  
warranty

\*The steel colours shown in the catalogue have been reproduced to product colours. However, we recommend you check the chosen colour against actual samples of the product as varying light conditions and limitations of printing affect colour tones.

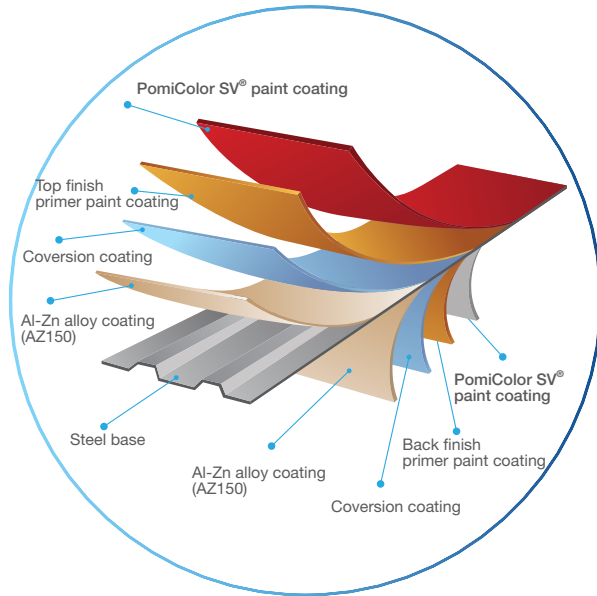
## SHIELDVIET LEED PRE-PAINTED HOT DIP ALUMINIUM-ZINC COATED STEEL COIL

### Characteristics

The AZ150 Aluminum-Zinc coating, together with the superior hot-dip galvanizing technology and the PomiColor SV® paint layer, is designed to reflect light and minimize heat absorption to the highest extent. This creates excellent thermal resistance and serves as a foundation for creating green and environmentally-friendly projects in accordance with European standards.

### Applications

ShieldViet LEED is the premier choice for commercial, industrial, and infrastructure projects seeking to optimize energy usage or achieve carbon neutrality.



SPECIFICATION	Width (mm)	BMT thickness (mm)	APT thickness (mm)	Density (kg/m ±0.15)
<ul style="list-style-type: none"> <li>• Coating mass: AZ150</li> <li>• Grade: G350 - G550</li> <li>• Standard: BS EN 10169 (EU)</li> <li>• Color coating thickness: 25/10 µm</li> </ul>	1200	0.34	0.40	3.44
	1200	0.40	0.45	4.01
	1200	0.45	0.50	4.48
	1200	0.50	0.55	4.95
	1200	0.55	0.60	5.42
	1200	0.60	0.65	5.89

### EUROCA COLOURS



### WARRANTY



Fading  
warranty



Anti-corrosion  
warranty

\* Solar Reflectance Index (SRI) is an approximate value, calculated according to ASTM E1980. Reach SRI ≥ 82 for low slope ≤ 15%

\*The steel colours shown in the catalogue have been reproduced to product colours. However, we recommend you check the chosen colour against actual samples of the product as varying light conditions and limitations of printing affect colour tones.

*THE MILESTONES AFFIRMING THE REPUTATION OF POMINA FLAT STEEL*



Pomina Flat Steel Mill, Ba Ria - Vung Tau Province



Mareep Factory, Nghe An Province

# CUSTOMERS & OUTSTANDING PROJECTS



Cobi Logis Project, Long An Province



Apache Shoes Manufacturer Factory Project, Tien Giang Province



YoungJin Project, Bac Giang Province



Wist Vina Project, Thai Nguyen Province



Long An Postal Transport Operations Center



QH Plus Factory, Ba Ria - Vung Tau Province

# CUSTOMERS & OUTSTANDING PROJECTS



Thai Thinh Factory, Binh Phuoc Province



Long Son Cement Factory, Thanh Hoa Province



Sein Vina Factory, Bac Ninh Province

**34**

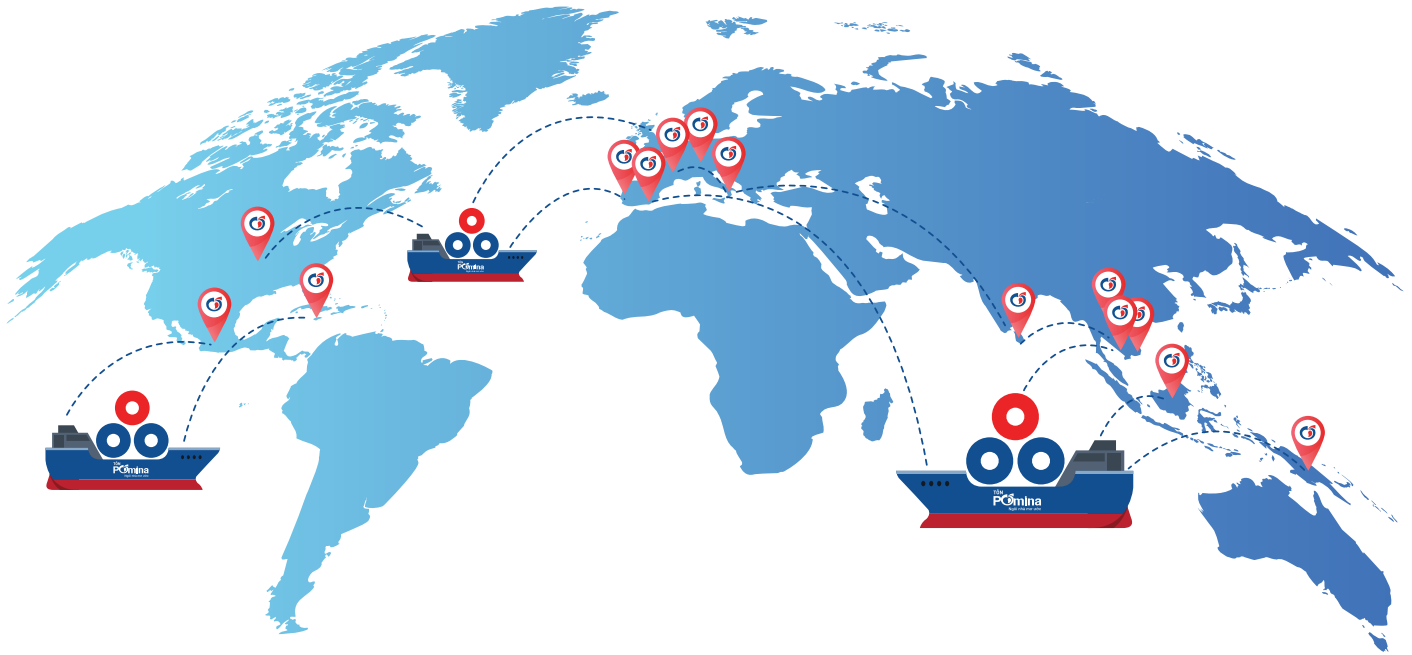
**CUSTOMER  
DISTRIBUTION  
SYSTEM**

MORE THAN **300** RETAILER STORES ACROSS VIETNAM

**CUSTOMER DISTRIBUTION SYSTEM THROUGHOUT 63 PROVINCES**



## REACH OUT TO THE WORLD AND ELEVATE POMINA REPUTATION



**Mỹ**  
USA



**Mexico**  
Mexico



**Jamaica**  
Jamaica



**Brazil**  
Brazil



**Tây Ban Nha**  
Spain



**Bỉ**  
Belgium



**Pháp**  
France



**Ý**  
Italy



**Đức**  
Germany



**Ba Lan**  
Poland



**Lào**  
Laos



**Campuchia**  
Cambodia



**Malaysia**  
Malaysia



**Sri Lanka**  
Sri Lanka



**Papua New Guinea**  
Papua New Guinea

**TAP CHÍ KIẾN TRÚC**

**Pomina Granite AZ50 – Dòng tôn giả ngói chống nóng hiện đại cho công trình**

Tôn giả ngói chống nóng là vật liệu lợp mái của xu hướng hiện đại. Đồng thời, nhiều sắc phẩm còn tạo nên chuẩn mực thẩm mỹ thời đại mới cho công trình dân dụng.

Nổi bật trong các sản phẩm tôn giả ngói chống nóng trên thị trường chắc hẳn phải kể đến Tôn Pomina Granite AZ50. Bấy đồng sơn sừng ngói với nhám đột phá đã tạo ra sự khác biệt biệt công nghệ, hệ sơn phủ cao cấp và đặc quyền.

**Lợi ích của tôn giả ngói chống nóng đối với công trình dân dụng**

Mái nhà lợp tôn giả ngói chống nóng mang nhiều ưu điểm vượt trội. Người nhà nắng cách nhiệt làm mát như các dòng tôn lạnh màu khác thì tính thẩm mỹ cao là điểm 10 của sản phẩm này.

**Cách chống nóng hiệu quả cho nhà cấp 4 mái tôn**

Nhiều chủ thầu xây dựng đã gọi ý giải pháp phát huy hiệu quả khả năng chống nóng của vật liệu tôn lạnh.

Thì công trình tôn lạnh cách nhiệt cách âm

Trần tôn lạnh cách nhiệt là một trong những cách chống nóng cho nhà cấp 4 mái tôn tối ưu nhất hiện nay, đáp ứng nhu cầu làm mát, giảm ồn hiệu quả cho không gian sống của người tiêu dùng. Tôn lạnh cách nhiệt được tạo ra từ sự kết hợp của tôn lạnh, lớp xốp cách nhiệt và một lớp lót bạc tại mặt dưới tấm lợp.

**BẢO CHỨNG CHẮC CHÁN CHO MÁI NHÀ VIỆT**

**2 LỚP CỤC MÀ**

- Chống nóng
- Chống ồn cách âm
- Đảm bảo 15 năm
- Khả năng chịu tải

**Tôn Pomina tạo bước đột phá với dòng tôn lạnh Solar AZ100® thế hệ mới**

Với tầm nhìn trở thành nhà cung cấp cấp đầu về chất lượng tại Việt Nam, Tôn Pomina - thành viên Tập đoàn Thép Pomina đã hợp tác cùng Tập đoàn sơn AkzoNobel để phát triển dòng sản phẩm tôn lạnh thế hệ mới Tôn lạnh Solar AZ100®.

**DAN TRI**

**Xu hướng xây nhà tiên chế cho công trình dân dụng hiện đại**

**Trương Thành** • Thứ tư, 07/10/2022 - 09:00

00:00:00 / 00:00:00

*(Dẫn đầu - Kết cấu nhà khung thép của nhà tiên chế nhẹ nên có thể xây trên nhiều diện tích, quy mô công trình, phù hợp với nơi có địa hình thấp, yếu.*

**Khái niệm nhà tiên chế**

Nhà tiên chế hay còn gọi nhà thép tiên chế là nhà xây dựng từ vật liệu thép, được chế tạo dựa theo bản vẽ kỹ thuật và lắp đặt trực tiếp tại công trường. Thiết kế này nhằm thay thế cho kiểu xây dựng cốt thép bê tông truyền thống và giúp thúc đẩy tiến độ thi công hiệu quả.

Kinh doanh > Doanh nghiệp Thứ hai, 24/10/2022, 08:00 (GMT+7)

**Hành trình 5 năm vững bước của Tôn Pomina**

Nền tảng chuỗi sản xuất khép kín cùng chiến thuật kinh doanh linh hoạt đã thể hiện sức bật của Tôn Pomina trên hành trình chinh phục thị trường trong nước và quốc tế.

Công ty Cổ phần Tôn Pomina, tiền thân là Công ty TNHH Tôn Pomina là một trong những công ty sản xuất tôn mạ có tốc độ tăng trưởng nhanh và ổn định hiện nay. Tuy là doanh nghiệp trẻ, đại diện công ty cho biết doanh nghiệp luôn tạo môi trường làm việc chuyên nghiệp, khuyến khích nhân viên phát huy những ý tưởng sáng tạo mới theo đúng tinh thần, sự năng động của đội ngũ nhân lực trẻ; mà vẫn tuân thủ các tiêu chuẩn về môi trường và an toàn lao động.

Trụ sở nhà máy Tôn Pomina tại khu công nghiệp Phú Mỹ I, Bà Rịa - Vũng Tàu.

Mặt khác, công ty luôn coi con người là yếu tố trung tâm làm nên thành công, nhờ vậy, đã tạo nên một thế hoàn chỉnh, đồng thời liên tục cải tiến để tạo ra sản phẩm tôn chất lượng, đáp ứng tốt các đòi hỏi khắt khe trên thị trường.

**Tôn Pomina khẳng định sức hút với thị trường Mỹ**  
 18-05-2022 - 07:05 AM | Doanh nghiệp



Ghi nhận trong 4 tháng đầu năm 2022, Tôn Pomina tiếp tục đóng góp tích trọng ngành xuất khẩu với hàng loạt các đơn hàng xuất khẩu đến Mỹ, Châu Âu... Đặc biệt, với là thành phẩm tôn lạnh mạ màu xuất sang thị trường Mỹ, Tôn Pomina dần khẳng định uy tín với những thị trường tôn mạ chất khê bậc nhất thế giới.

---

**Tôn Pomina ra mắt dòng tôn lạnh Solar AZ100**  
 Thứ ba, 26/05/2021

Sản phẩm cấu tạo gồm hai lớp phủ chống ăn mòn và lớp phủ độc quyền Pomina Crystal cho bề mặt chống oxy hóa tốt, ngăn chặn tác động từ môi trường.

---

**Doanh Nhân Online**

**Chuyện làm ăn**

**Tôn Pomina đã có lô hàng xuất khẩu đầu tiên ra thị trường quốc tế.**  
 Ngọc Yến | Thứ hai, 23/05/2021 | 15:58 GMT+7

Công ty TNHH Tôn Pomina đã chính thức xuất khẩu lô hàng đầu tiên ra thị trường quốc tế chỉ sau hai tháng đi vào sản xuất. Với số lượng đơn hàng xuất khẩu hiện chiếm tới 40% tổng sản lượng xuất bán trên toàn bộ dây chuyền, Tôn Pomina vinh dự được đặt chân và khẳng định vị thế của thương hiệu Việt trên bản đồ công nghiệp thế giới.

---

**Tôn Pomina liên tiếp xuất khẩu sang thị trường châu Âu**  
 13-12-2021 - 08:00 AM | Doanh nghiệp



Bằng quyết tâm và nỗ lực không ngừng, để cao tinh thần "Đúng định lượng - Chuẩn chất lượng", Tôn Pomina đã tạo được những cột mốc đáng tự hào khi liên tiếp xuất khẩu sang nhiều nước châu Âu.

**TAP CHI KIẾN TRÚC**

**Pomina Granite: Cuộc "cách mạng thẩm mỹ" trong ngành Tôn Việt**  
 07/12/2021

Phát huy được tính ưu việt đồng thời mang đến giải pháp khắc phục nhược điểm của tôn sóng ngói, Tôn Pomina đã nâng tầm tôn này lên một tầm cao mới.

Tôn sóng ngói: Xu hướng thiết kế cho mái nhà hiện đại

---

**Tôn sóng ngói Granite – xu hướng mới cho mái nhà hiện đại**  
 05/04/2021

Nhiều chủ công trình đang bắt đầu chuyển hướng dùng tôn rầm sóng ngói thay thế dần cho mái ngói gạch truyền thống. Trong đó, tôn lạnh màu hiện rất được ưa chuộng vì đặc tính chống nóng, kháng bụi, chống phai màu vượt trội.

---

**Xu hướng sử dụng tôn sóng ngói trong các công trình xây dựng**

Tôn Pomina Granite tạo sóng ngói chân thật, mang tính thẩm mỹ thay thế các loại tôn lợp thông thường.

Xu hướng sử dụng tôn sóng ngói ngày nay đang phổ biến trong các công trình xây dựng bởi tính ứng dụng cao, đáp ứng các tiêu chuẩn thẩm mỹ cho các công trình biệt thự, nhà phố đa tầng, nhà mái Âu, mái Thái...

---

**DAN TRI**

**Tôn Pomina Granite: Đẳng cấp mái nhà hiện đại**  
 Trương Thiện • Thứ ba, 07/12/2021 | 10:00

Đến từ - Khi lựa chọn sản phẩm tôn lợp mái cho thiết kế kiến trúc đẳng cấp và hiện đại, các chủ thầu công trình luôn đề cao chất lượng cũng như tính thẩm mỹ. Đó cũng là lý do mà họ lựa chọn Tôn Pomina Granite.

---

**VN EXPRESS** Thứ bảy, 10/7/2021

**Thương hiệu Tôn Pomina sau hai năm ra mắt thị trường**

Dù là "gương mặt mới" trong thị trường tôn mạ nhưng nhờ định hướng cũng chiến lược phát triển tốt, sau hai năm, Tôn Pomina được nhiều người biết đến.

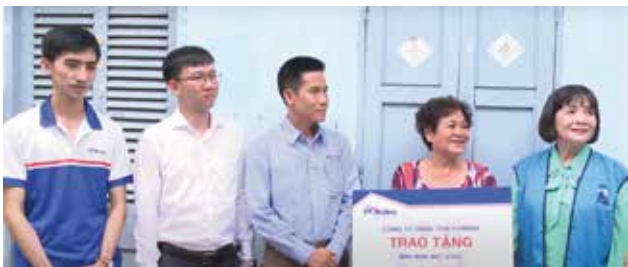
Accompanying the Women of Charity Association of Ho Chi Minh city in implementing the **"LOVE FOR LIFE"** program on HTV9



Giftng Dream Home to - Mr. Hung and Ms.Trang



Giftng Dream Home to - Mr. Tran Tu Bang Giang



Giftng Dream Home to - Ms. Huynh Thi Tuyet Mai



Giftng Dream Home to - Ms. Nguyen Thi Anh

**SHARE THE LOVE**



Thuan Hoa Ward., Ham Thuan Dist.,  
Binh Thuan Province



Dong Tien Ward., Ham Thuan Bac Dist.,  
Binh Thuan Province

Collaborate with the Architecture Office 1+1>2  
in the project **“SHIELDING DREAMS”** for children in highland



Tia Kinh Kindergarten



Ngoi Cay Kindergarten



Huoi Hao B Kindergarten



Ngoi Cay Primary School



Ta Lang Cao Kindergarten



Pu Kho Kindergarten



Ban Thai Kindergarten



Thanh Tan II Kindergarten



Ky Thi Kindergarten and Primary School

**POmina**  
FLAT STEEL

*Thanks for following our story!*

**POmina**  
FLAT STEEL



**Pomina**  
FLAT STEEL

**Address:** Phu My 1 Industrial Park, Phu My Ward,  
Ho Chi Minh City, Vietnam

**Telephone No.:** +84 254 3895 118

**Email:** [info@pomina-flat-steel.com](mailto:info@pomina-flat-steel.com)

**Website:** [www.pomina-flat-steel.com](http://www.pomina-flat-steel.com)

